

Course HS1: An Introduction to Health and Safety at Work

COURSE DURATION:

45 minutes

TARGET AUDIENCE:

- New starters
- Any worker needing basic health and safety training

AVAILABLE IN:

- Audio
- Non-Audio

DELIVERED VIA:

- Intranet
- Internet
- CD Rom

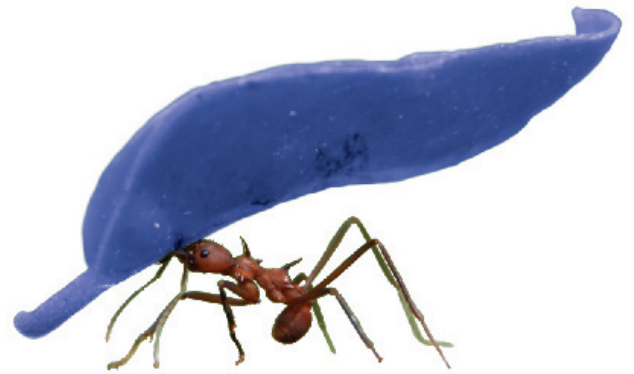
As someone responsible for health and safety it probably surprises you how cavalier people can be about workplace health and safety, especially in apparently safe environments such as an office.

This course underlines the very real risks that exist in all workplaces, whilst reinforcing the personal responsibilities laid down by law. It also addresses the learner's attitude to health and safety, and discusses in overview the type of risks they face.

This course helps the learner to recognise health and safety as a real workplace issue.

Course Content

- Why health and safety is a key issue for both employers and employees
- Accident statistics
- The legal situation
- An overview of job, environmental and attitudinal risks to health and safety
- Taking action in the event of an accident
- Getting help and advice on health and safety matters.



For further information or to arrange for a free evaluation of this course contact We Teach You at:
t. 08 700 800 800 f. 08 700 800 801 e. enquiries@weteachyou.co.uk w. www.weteachyou.co.uk